

Display & Accessories



Liberty Systems
LIBRARY FURNISHINGS



3 Bethesda Metro Center, Suite 700, Bethesda, MD 20814
800-487-6421 libertysystemsinc.com

When a new library opens, it typically has everything it needs to be successful. Over time, the shelving stays the same, maybe furniture is added or replaced and maybe you have a small facelift of an area. However, display and accessories are things that change quite regularly. With books on display being some of the most circulated, having good display pieces is essential. Whether it be face out, spinners, slat wall or tiered, in wood, laminate or acrylic, we have many options.

We also have electrical components, slatwall panels and signage to help keep things flowing through your library.

Don't just turn to your typical catalog company for these things! With our relationships with factories, or with the use of purchasing contracts, we may be able to get you what you're looking for at a better price with more finish options!



Baxter



Display Case



Shore



Benson



Burke



Pedestal Display



Tivoli

Livelli

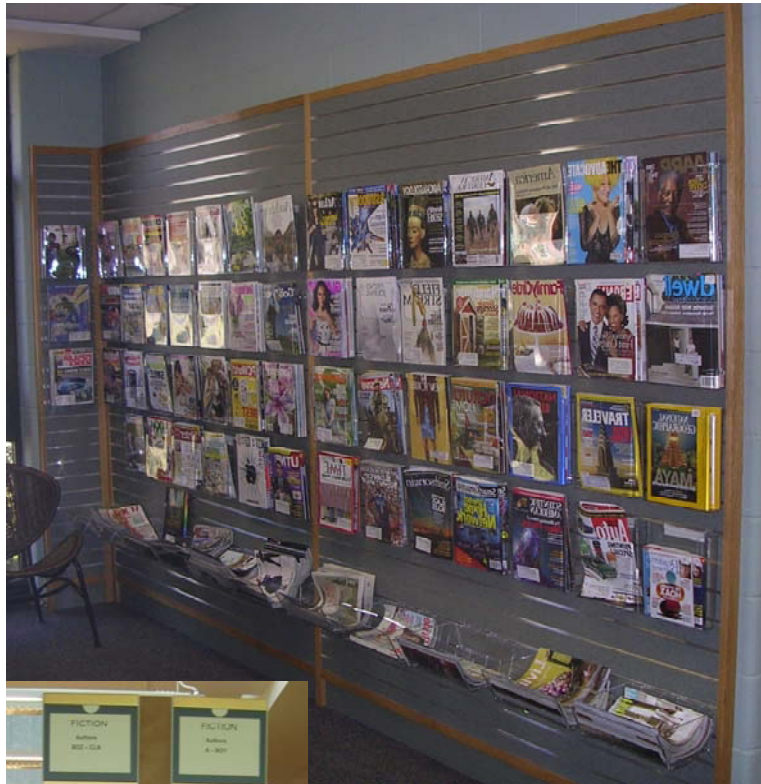
A wooden mobile shelving unit with three shelves and four compartments per shelf, mounted on casters. The unit is made of light-colored wood and has a slanted back. Each shelf is white and has four compartments, each with a curved front and a small handle. The unit is mounted on four black casters.



Center Stage



A large, multi-tiered acrylic display rack filled with numerous books, standing on a wooden base in a library setting. The rack is composed of several vertical acrylic columns of varying heights, connected by horizontal acrylic bars. Each column is densely packed with books of various sizes and colors. The books are arranged in a way that their spines are visible, creating a colorful mosaic. The entire display is supported by a sturdy, light-colored wooden base. In the background, other library shelves and a "NEW" sign are visible, indicating a well-stocked library environment.



Slatwall



Slatwall is a very popular way to display. With the use of metal inserts, different laminates and spacings, it can provide a very clean look. With the right slat wall accessories, you can display any material.





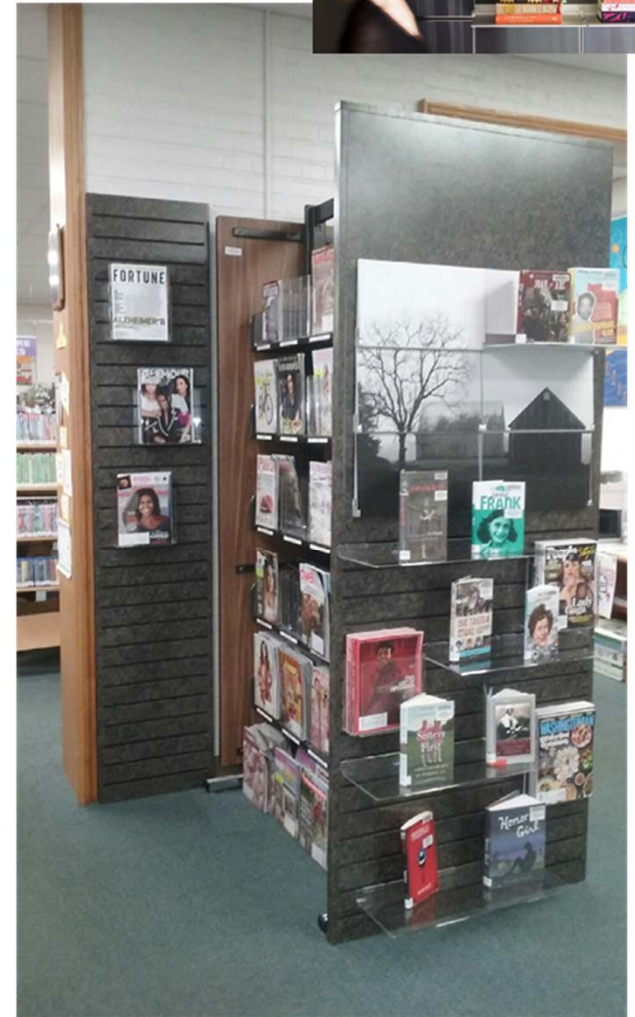


Crate Divide



Crate

Stack Store is a great option for the storage of puppets or other material in a children's area. Plants also love these mobile, stackable canisters!



The Riveli fold down shelf allows you to use the shelf to display new books or when folded up, magnetic panels show case a local artist's work, a message, your library's logo or anything else that can be printed.

MagBoxes are a fantastic way to have more shelf flexibility in your library.

For magazines and news papers, they keep you from being locked in to the large foot print of periodical shelves. A MagBox has the current issue facing out and the back issues stored behind it.

For DVDs and picture books, MagBrowse displays titles face out which makes them easier to browse.

Magbrowse for DVDs or picture books

If you reduce your number of titles, you can simply remove the box (or browse) from the shelf and you've freed up space! They also make any collection shift easier, again, because you aren't locked in to a specific shelf type!



Magbox for newspapers or magazines

Portable room dividers are a great way to separate areas for meetings, group study, events, or even story time. With white boards, fabric, or colorful materials, they can be both multipurpose and inviting!



Another way to separate spaces would be to use a semi-permanent wall system. These walls are not structural and can be added and taken down without major construction or altering your building.

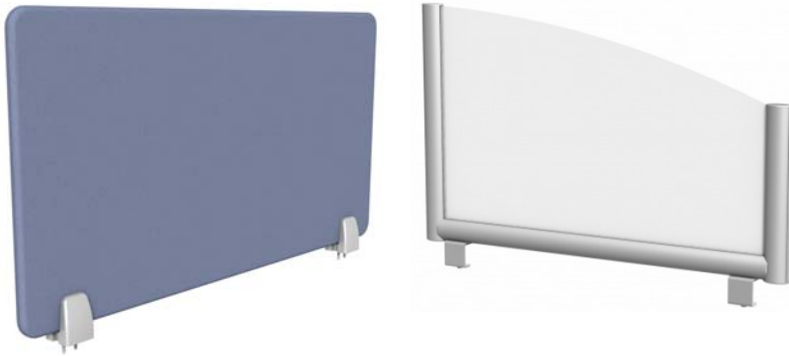




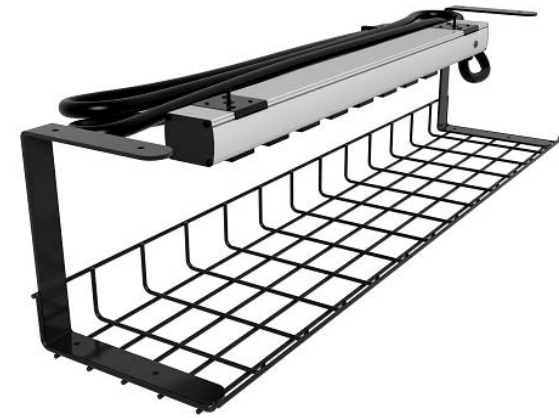
Electrical components are a great way to keep your patrons coming back! They have a place to plug in to stay charged. With the option of stand up units that can move around the library or surface mounted units, every area can have a charging station to keep laptops, phones, and tablets charged



Work surface dividers are a great way to take a large table and divide it in to smaller work spaces for some privacy between computers or patrons.



And with great power comes great responsibility... how to get the power to floor! There are many different types of j-channels, power legs, grommets and other wire management accessories.



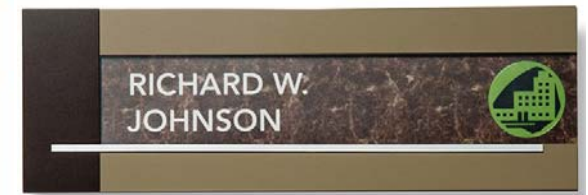
If you have a gaming room or a children's area that gets a tad too loud, acoustical wall panels are a great way to tone things down in a decorative way!



Monitor mounts are also a great accessory and can come with or without power, single, dual, clamp on or bolt on and heavy duty options.



Show them the way. With interior and exterior architectural signage, we can identify and direct people from one place to the next. Signs can be provided to designate collection locations, range finders, building zones, offices, etc. and can be customized with your library's logo and color scheme.





800-487-6421

www.libertysystemsinc.com