

Liberty Systems

LIBRARY FURNISHINGS



At A Glance

3 Bethesda Metro Center, Suite 700, Bethesda, MD 20814
800-487-6421

libertysystemsinc.com

Table of

1-4
Shelving

5-6
End Panels

7-8
Service Desks

9-10
Furniture

11-12
Seating

13
Group Study

14
Modular Furniture

15
Power

16
Maker Spaces

17
Storage Solutions

18
Display

19
Room Dividers

Contents

Single Slot Steel Cantilever Shelving

Single slot steel cantilever shelving is the industry's most advanced and cost effective single-slot library shelving system on the market today.

It offers a narrower footprint the capability to grow in height and it also has an open design which will keep your library feeling more airy than it would with case type shelving.

This shelving is also structurally sounder than welded frame as it does not require a base shelf for stability, nor does it need an end panel for anything but esthetics.



Picture book browsing bins



Integral back shelves with sliding wire book supports



Sloped multi-media shelves



Pull out browsing boxes



Single slot can also be placed on either casters to provide your library with the utmost flexibility. Unlike other shelving manufacturers whose tallest mobile shelving is 48"H, System 30 can be as tall as 66"H.

There is the option of standard casters, or hidden casters. For more information we invite you to take a look at our rolling shelving brochure.



Curved shelving can be stationary or on casters can add visual interest to a linear space. Use it to create division between Children's & Teen areas or as an eye catching space for new book display.

System 1000 is your basic welded frame design. While it doesn't have all the capabilities of System 30 it can be free standing with no overhead bracing or floor fastening as long as the base shelf is deeper than the adjustable shelves. It also has several accessories for different types of collections such as hinged and fixed periodical shelves, divider shelves, sloped multimedia shelves, pull out reference shelves along with the standard flat shelf.



Divider shelf



Hinged periodical shelf

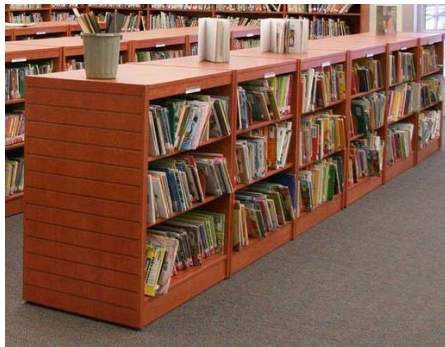


Sloped multi-media shelf

Wood Case Type

Shelving

Wood shelving is great in a traditional setting and you truly can't get a warmer look. Unfortunately, it doesn't offer many shelf types but accessories like MagBoxes can help to maximize your storage. Curved mobile units are also a more modern option for special collections, in combination with seating or displays!



End Panels

We have been a part of hundreds of library projects and while many of them have the same shelving, each of them are different. Shelving end panels play a big part in the design and feel of a library. They also allow you to differentiate the areas of your library. For example, your Young Adult/Teen area may have “funky” end panels, where as your Children’s area may have cute cut outs, colors or interactive displays on their panels.

With the different manufacturers we can use any type of wood, laminate, metal, acrylic, or a mix of materials. This is a small sampling of panels we’ve done over the years and some examples of how different areas were outfitted with different panels.

Silver Spring Library



Main Areas of the Library



Juvenile Area



Children's Area



Teen Area

Waldorf West Library



Main Areas of the Library



Teen Area



Children's Area

End Panels



Emmaus Public Library



Mary Riley Styles Public Library



Long Branch Library



Middletown Free Library



Crisfield Library



Fairview Library



Washington County Free Library



Upper Dublin Public Library



Sterling Library



Gum Spring Library



Tyson Pimmit Library



Meadowbrook Library



Montclair Library

Service Desks

Service desks in a library are pieces that have to function better than any other part of the library. It is of utmost importance that the library staff can work diligently in the space and it also needs to fit the design and logistics of the building. Those factors equate to most circulation desks being custom made. Our design team and millwork facilities are capable of producing any custom desk with any combination of materials.

While the main circulation desk is typically a substantial piece, we are finding libraries are using mobile information desks that can be moved around to fit changing needs. Our manufacturers have recognized these needs and are now producing standard units with various design and functionality options.



Service Desks



Tables

Along with shelving, tables are a pretty important part of a library. No space is truly user friendly without them. Whether for computers or those that

come in to do research, homework, study, or even play board games, a flat surface is a must.

Like everything else, the table style has to flow and there are some pretty good options to choose from! Those options include different shapes, sitting, standing and café heights, lap top bars, metal or wood bases, etc. Each option brings with it it's own look and functionality.

Here's a few we opted to showcase.

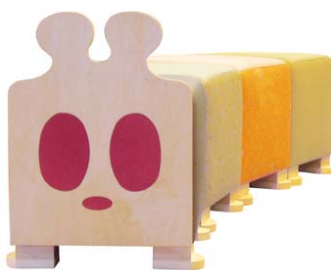
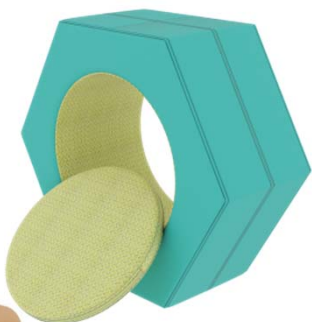


Both Children's and Young Adult spaces get used more heavily by their respective age groups when the space is tailored to them. That means bright colors, cute furniture and interactive pieces for the littles and funky, comfy and cool for the teens. Just like everything else, we've got what you need for both.

Youth Spaces



©2022 Lisa Albin, LLC. All Rights Reserved



Seating



Seating comes in a wide range of shapes, sizes and materials. Many styles are available as a chair and stool which allows you to keep a complimentary look, even at café tables or counters.

While we are selling less upholstered seating than in the past, the number of plastic and all wood chairs being sold has increased because of sanitary reasons. There are hundreds of chairs and stools we could showcase in this brochure but since this is an at a glance book, we've limited them. If you're interested in seeing more, please give us a call!



Lounge Seating



Like side chairs, lounge seating styles and options are nearly limitless! Size, shapes, arms, tablet arms, casters, and even electric are physical attributes that can make your soft seating areas comfortable enough spaces to enjoy a good book or work on a device but maybe not so comfortable you catch unwanted nappers.



We also recognize the need for durable, fabrics that won't easily absorb spills from cups, leaks from pens or drool should you actually catch a napper.



Privacy/Group Study



Group study areas may not be in high demand in a small neighborhood library but in larger community libraries or in colleges and university settings, groups of students may need an area to work on a project, hold a study session or even play chess.



We have booths in all shapes and sizes that offer just enough privacy to fully enclosed units or non structural wall systems. Add in a whiteboard table top for brainstorming or a panel to mount a TV and give your groups everything they need to ace whatever project they are working on!

The need varies on a project by project bases but we have you covered.





Lets say you are that small neighborhood library or a larger library that just doesn't have the space to accommodate a booth for group study. The best solution is reconfigurable furniture.

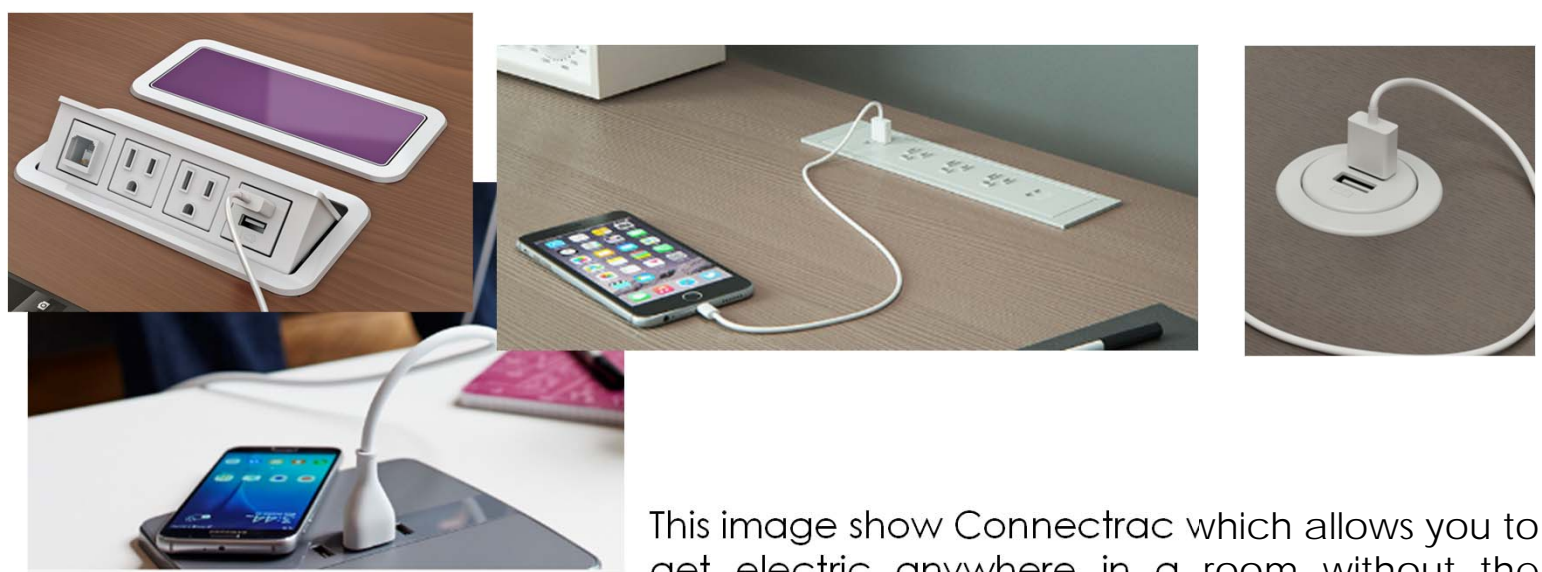
We have tables that can stand alone, then when a group comes in, they can easily be pushed together for groups to work together fluidly or a presentation in a community room. Our favorite reconfigurable table even has the white board top we mention and can fold and nest for easy storage.

Seating on casters, either side chairs or lounge chairs can be added in for maximum flexibility.



Power

Being plugged in requires the need to...well...plug in. There's multiple options here too. There are pieces that can go in your table top, free standing units and many lounge chairs can have power units built in to them. There are units with outlets, USB and/or Qi wireless charging to allow your patrons to stay fully charged.



This image show Connectrac which allows you to get electric anywhere in a room without the need for trenching or unsightly power poles. It is made in such a way that you don't even know you're walking over it.



The Powerball unit has fast charging USB ports that can be upgraded as technology changes without hiring an electrician. The Powerball is available as an in table unit or a portable tower that can be moved around with reconfigurable furniture.



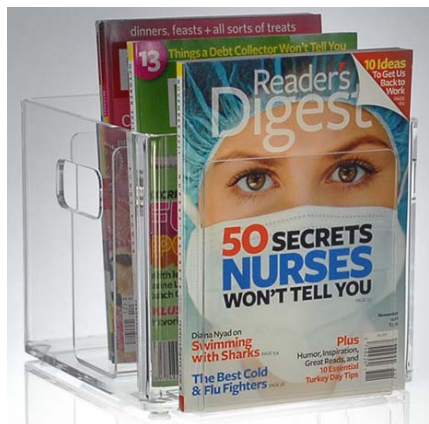
Maker Spaces are popping up in libraries all across the country. If your library is equipped with 3D printers, sewing machines or other devices, you may need a cart or other storage options to secure them while the makers space is closed. Smaller carts similar to these also great for gaming consoles.

Maker Space



Storage Solutions

When space planning an area, many libraries add in special shelves to house periodicals, newspapers and face out display. This locks in you to having those shelves until you raise the funds to replace them.



MagBoxes can be placed on a standard flat shelf and display the current issue while storing the back issues. When you gain more titles, add more boxes, lose a title, take it away and you've opened up useable shelf space.



A shelf with an adjustable back stop, which we've dubbed the chameleon shelf, also helps with not having all different shelf depths. You can standardize with one shelf throughout the library and adjust the back stop to accommodate picture books, reference, paperbacks, media or MagBoxes. If your collection changes, change the backstop, not the entire shelf.

Seasonal, new, hot topics, community are all things that may cycle through your display areas. Some great display pieces help keep titles cycling through your doors!

Display



The Riveli shelf is a piece that folds down to display pieces or folds up to showcase artwork. An image you choose is printed on magnetic tiles that can be updated whenever you'd like!



Table top display



MagBox
Slatwall Display



Room Dividers

With more building being built as wide open spaces, sometimes you just need separation. Room dividers can be temporary wall systems, small portable dividers, large portable dividers or smaller fixed partitions. They are also a great way to keep patrons out from behind a mobile information desk that may be in the center of the floor.



Things Liberty can help my library with:



800-487-6421
www.libertysystemsinc.com